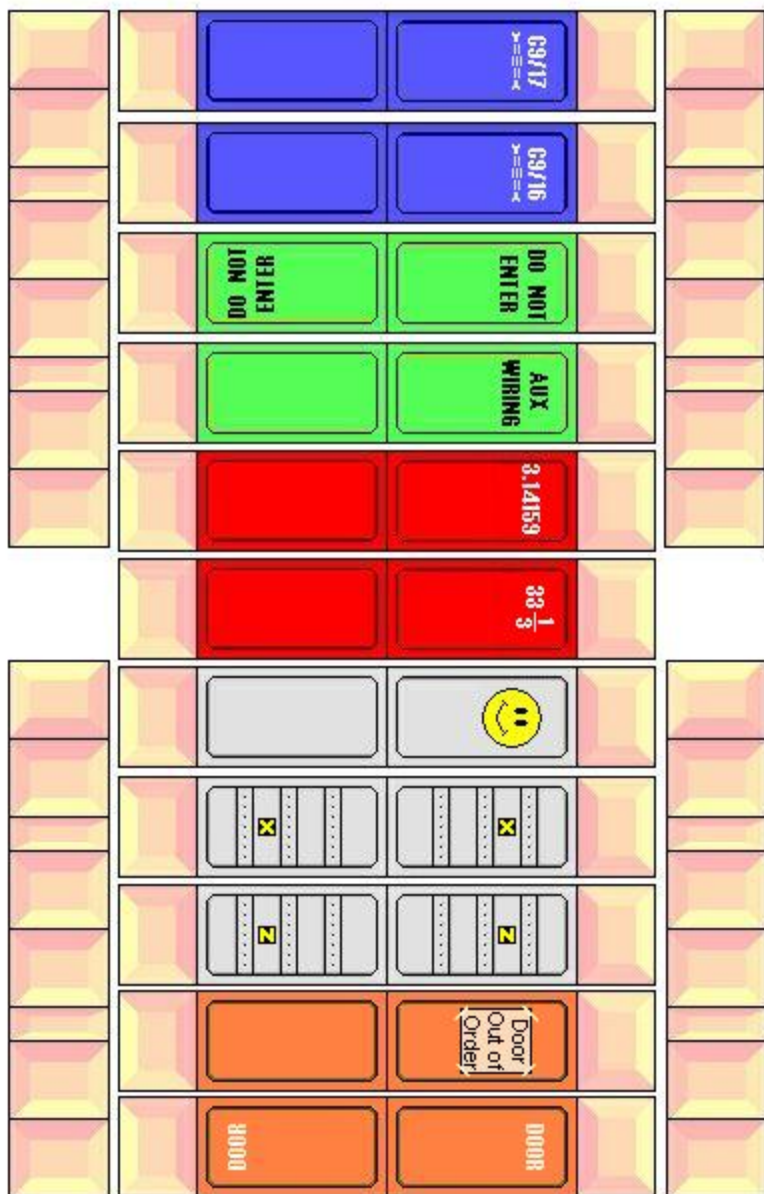


Folding SF Interiors - Doors

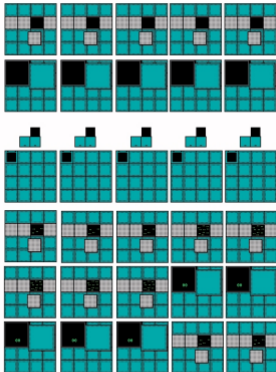
Print as needed.



Fold the doors and glue together, now you can insert them into the open top of doorways to simulate a closed door.

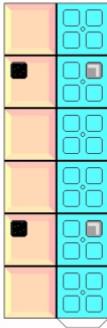
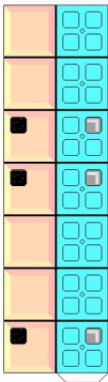
Note: If you don't like my texts, just glue two blank sides together!

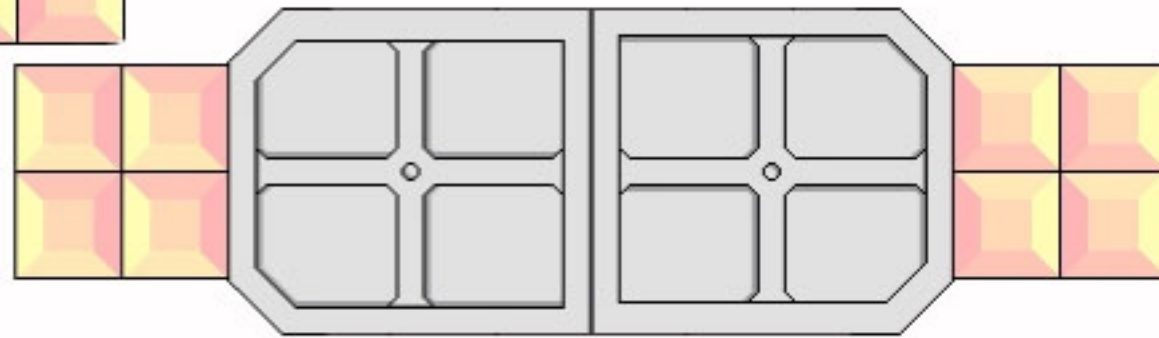
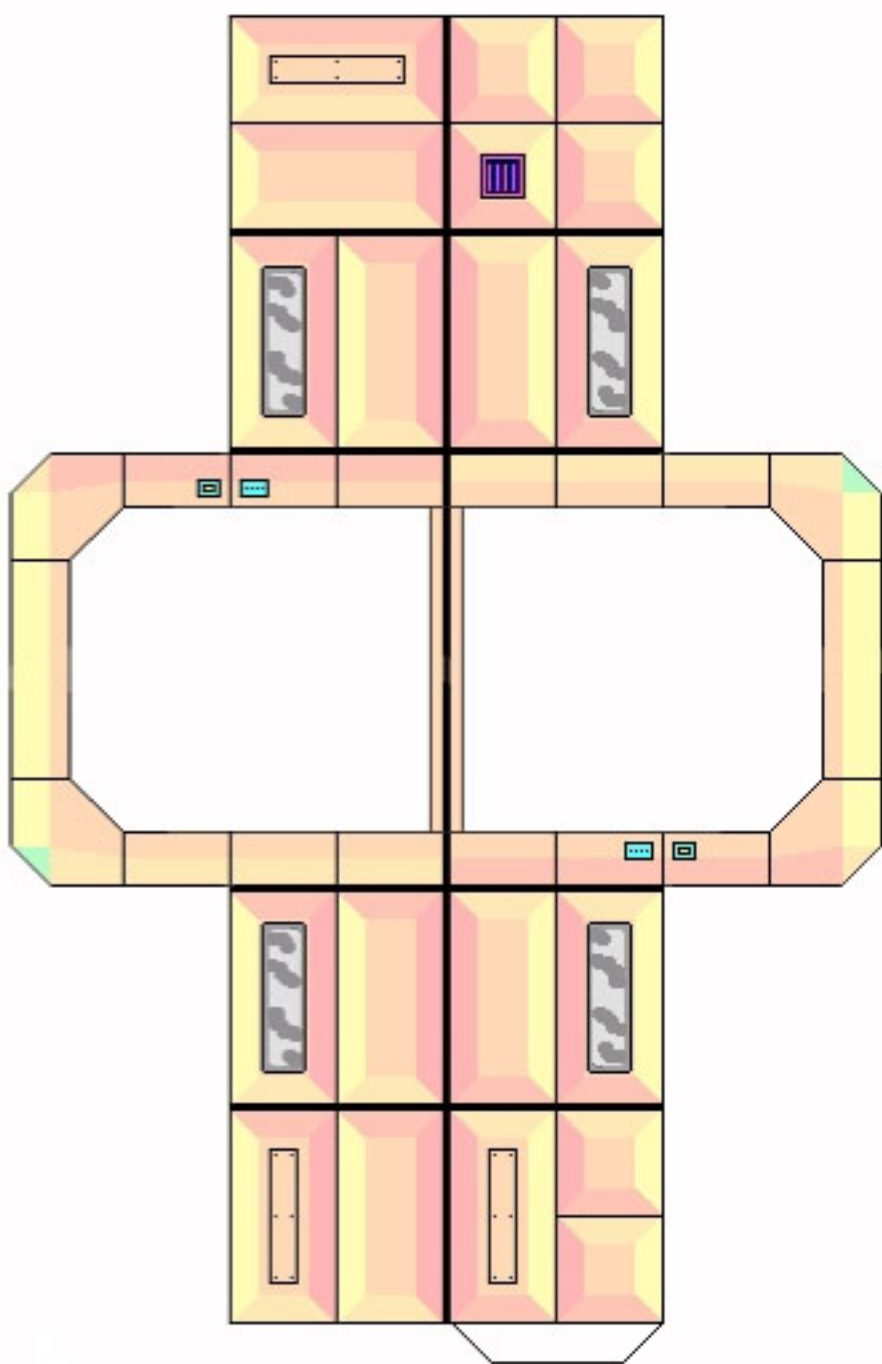
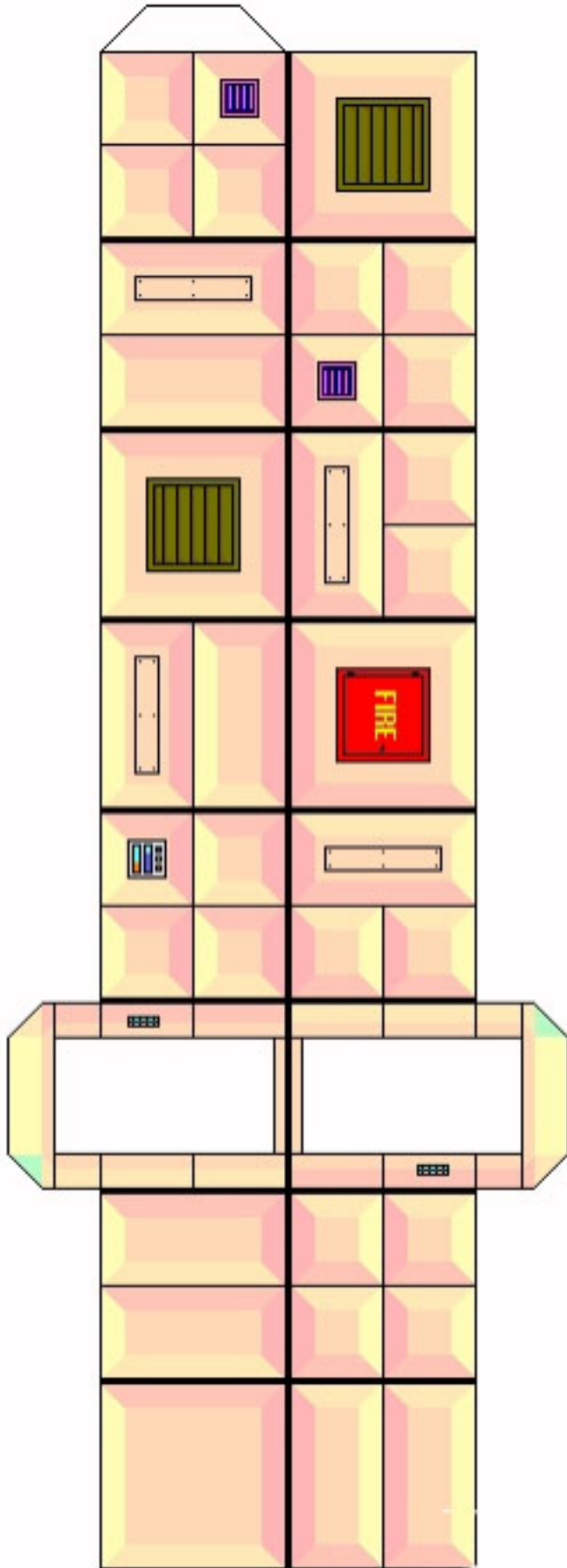
Folding SF Interiors - Open floors and surprises

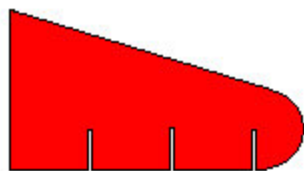
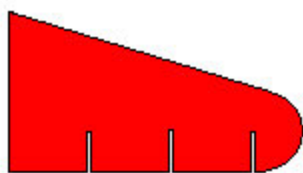


Folding SF Interior - Outside Walls

Use either of these walls in combination with the outside walls supplied with various sets to create rooms on the outside of the ship.







SFSTAMPS

Instructions for Using This File

This file is made of "stamps" from, or inspired by, Gerrit Postma's folding sci-fi facility, as created for paperworlds.com. It is in .BMP format so people without access to Gerrit's drawing tool of choice, NeoPaint, can still modify his sci-fi walls, or create new ones, using MS Paint or any other program that can handle the .BMP format.

The first four rows are Gerrit's own work, taken unmodified from his own walls. They are not a complete set of every one of his symbols, but include just about every wall section he uses, as well as two sizes of door and an access shaft via a ventilation duct. The gray shielded wall inside the large door is not part of the door. It's there because that's the only way I could fit it on the page. If you use the large door, remove the gray wall panel after you paste the door in place.

The remaining rows are my own work, modified from Gerrit's artwork. They include some different-looking wall panels, some double-sized panels, and some special panels that might prove useful in adventures, such as emergency air, a first-aid kit, and an armory. I also expand on his "blue" walls, which he used for a cryo facility.

To use these images, convert one of Gerrit's walls into .BMP format and load it in the graphics program of your choice. Now you can copy images from my "stamps" file, and paste them into the wall wherever you want them. Save the altered wall under a different name, so you don't lose your original.

Everything here is subject to Gerrit Postma's copyrights. I intend no challenge to those rights. He has granted me permission to modify other parts of his artwork and post them on paperworlds.com, so I am posting these in the same spirit.

Mike Fischer
Cke1st
mfischer@naisp.net

